



Roman Road, London, E3

BUTLER & STAG



Guide Price £325,000 - £375,000
Forming part of this small development of only four residential apartments on Roman Road is this stylish and characterful one bedroom residence.



Leasehold

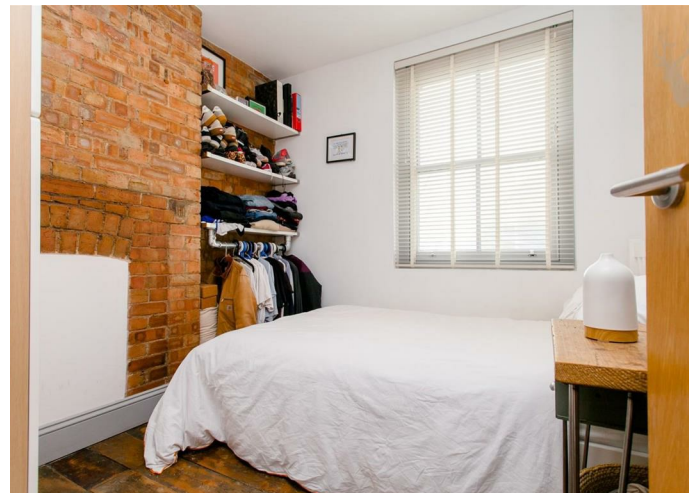
- First Floor
- One Bedroom
- Historical Roman Road Market Close By
- Resident Parking Available
- Mile End Tube Station
- Modern and Stylish Interiors
- Exposed Brick Work
- Victoria Park A Moments Walk Away
- Chain Free
- Cash Buyers Preferred

Having the historical Roman Road Market within a moments' walk of the development you really are in the centre of the social hub of Bow, East London.

From the designer kitchen, exposed brickwork, original timber floorboards, sash windows and high ceilings this property provides the perfect blend of charm and style.

Comprising a generously proportioned living/entertaining space which is open plan to a sleek modern fitted kitchen with quartz work surfaces. The bathroom is smartly kitted out in highly polished sandstone from floor-to-ceiling and features a large walk-in shower cubicle.

Roman Road is easily accessible to Victoria Park as is the canal tow path which is a hot bed for cyclists and joggers whilst there are excellent local amenities, good bus routes and the nearest station is Mile End Underground (Central, District and Hammersmith & City).





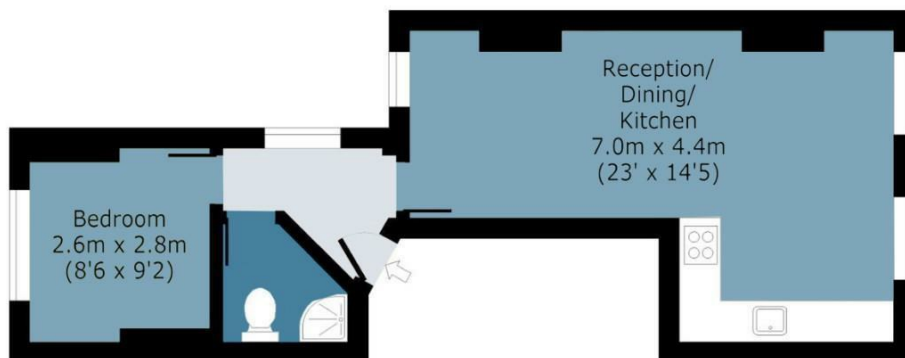
Red Brick Court

Approx. Gross Internal Area 38.57 Sq M (415 Sq Ft)

BUTLER & STAG

First Floor

Approx. 38.57 Sq. meters (415 Sq. feet)



Measurements are approximate and for illustration purposes only. While we do not doubt the accuracy and completeness, we advise you conduct a careful independent assessment of the property to determine monetary value.
© @modephoto.uk www.modephoto.co.uk

IMPORTANT NOTICE - These particulars have been prepared in good faith and they are not intended to constitute part of an offer or contract. We have not performed a structural survey on this property and the services, appliances and specific fittings have not been tested. All photographs, measurements, floor plans and distances referred to are given as a guide and should not be relied upon.

BUTLER & STAG

☎ 020 8102 1236

🏠 508 Roman Road, Bow, London, E3 5LU

✉ bow@butlerandstag.com

www.butlerandstag.uk